



**LYNFIELD
COLLEGE**

NEWSLINK

NEWSLETTER 14 | 6 SEPTEMBER 2024

From Tumuaki Cath Knell

He aha te mea nui o te ao

He tangata, he tangata, he tangata

What is the most important thing in the world?

It is the people, it is the people, it is the people.

Kia ora koutou

We appreciate that there have been many disruptions over the last couple of weeks. Roadworks outside our gate have made access to the school particularly challenging so we appreciate your patience and support in organising different drop-off and pick-up sites. Last week's power outage, believed to have been caused by a faulty switch in the transformer, was even more disruptive. On the Monday we went 'old school' and used the original school hand bell, rung by David Comber at the first school assembly on 3 February 1958, to mark the change in classes.

Annual School Goals

With the focus on attendance and punctuality we would encourage you to read through the infographic, prepared by Tawa School, and look to see the impact for your child. Weekly attendance percentage data is emailed to you each Monday.

Community, Staff and Student Surveys

Community, student and staff voice is currently being gathered in the first of the annual surveys to be conducted in Term 3. Thank you to those who have already completed this. The link appears later in this newsletter for those that haven't yet had the chance. Students can access their survey via the link posted on Schoology today.

Preparation for LitNum exams and Senior Assessments

Practice exams for students taking Level 2 and 3 courses will be held between 12-20 September. The importance of these assessments has been stressed in the Year 12 and Year 13 assemblies this week, should the results be needed as evidence in support of a derived grade for the externals. Every year there are students who are unexpectedly unable to sit an assessment due to illness, accident, unexpected weather event or bereavement. Knowing that there is a grade that has been generated under exam conditions will be reassuring to those needing this support. Please make sure that the assessment timetable is checked each day so that assessments aren't missed.

Nga mihi nui

Cath Knell

Tumuaki | Principal

IN THIS ISSUE

- Message from Tumuaki Cath Knell
- Talent Quest
- Y10 German Class Visits Bohemian Settlement
- NIWA Science & Technology Fair
- Climate Club NZ Guest Speaker
- Community Survey
- Wā Hono Project Week
- Shave for a Cure
- LitNum Assessment
- Senior Assessment
- Attendance
- Checking Measles Immunity
- Sports Scene
- Uniform & Stationery Shop
- Community News

COMING EVENTS

Tue 10 & Wed 11 September
LITNUM EXAMS

Thu 12 – Fri 20 September
SENIOR ASSESSMENT

In-school priority time

Mon 16 – Sun 22 September
TE WIKI O TE REO MAORI

Friday 20 September
LC German Exchange Students
depart for Germany

Sunday 22 September
LC Shinagawa Exchange
Students depart for Japan

Talent Quest

Even with the disruption of power outage last week, Talent Quest was a massive hit on Friday 30 August and Wednesday 4 September. From cultural dance to band performances, there were various performances that astonished the crowd. The Arts & Cultural Captains would like to thank the music teachers and the judges who gave up their time to make this event possible. We would also like to congratulate the following students again on their achievements for winning Talent Quest and thank other performers for their amazing contributions and bravery!

Best Dance: Julia Jenkins-Cox & Aundreah Lakatani

Best Singing: Naimah Manchanda

Highly Commended: Soular (band)



Y10 German Students Visit a Bohemian Settlement

On Monday 26 August, the Year 10 German class went on a trip to Puhoi. Puhoi is a village north of Auckland, where Bohemians (German speaking settlers) originally arrived via boat in 1893. They had to start clearing the land to slowly establish their community, houses, paddocks, crops and trading goods to make money.

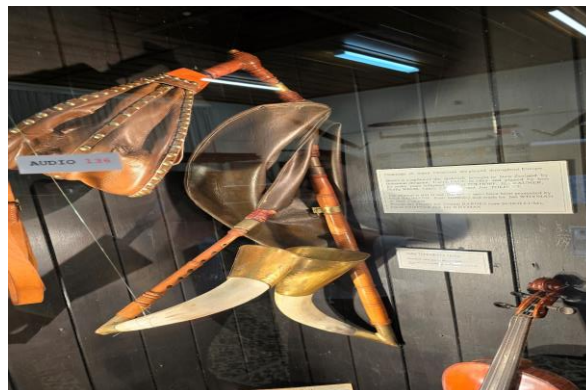
We went to the Heritage Museum and the Catholic Church of Saints Peter and Paul. The heritage Museum shows the early Bohemians' history and how they settled and lived in Puhoi. In the museum, there was a variety of antique, traditional clothing, agricultural machinery, cutlery and a recreation model of what the land used to look like in 1900. The museum opened in 1923 replacing the public convent school that had been there since 1872.

In the Catholic church we explored the beautiful interior designs of the church. And later, we sat and listened to the history and traditions of the Church. It was founded in 1881 and is still active for mass, weddings, etc and is a popular destination for tourists interested in the history.

We also visited the Puhoi Cemetery. There we walked around in silence respectfully acknowledging the past settlers and their descendants. Some headstones even displayed Egerländer German phrases and Bible passages.

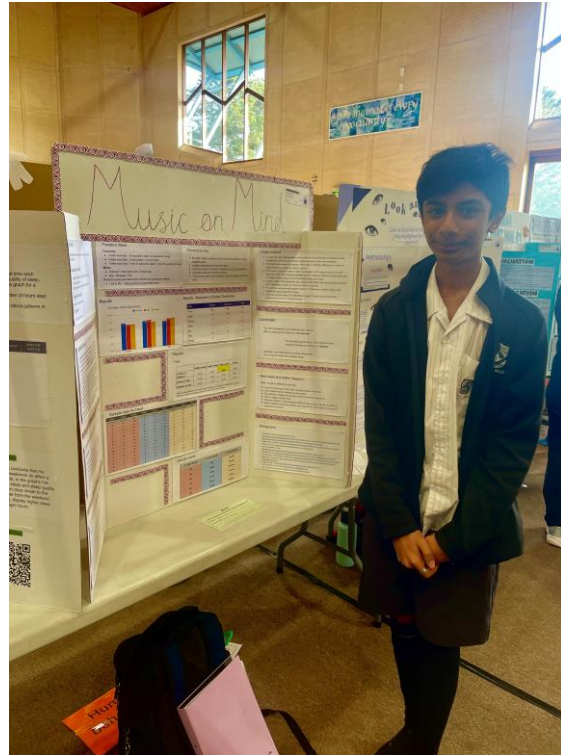
Before leaving, we all came together by the wharfs on the river Puhoi to have a traditional German lunch. This consisted of cheese, meats, bread and condiments such as mustard and jam.

It was fascinating to learn about the journey and hardship the settlers went through to be gifted and settle on land, starting a new life across the other side of the globe and preserving some German language, traditions and customs.



Science Fair

On Friday 30 August, six students from Lynfield College participated in the annual NIWA Science and Technology Fair. Rana Tanvi (10SRY) and Aarush Duvvuri (9BRC) competed in the Human Behaviour category, among a large number of participants in their age group. Rana won Second Prize with her project *Feel the Beat* and Aarush was awarded Highly Commended with her project *Music on Mind*. Congratulations to both!



Climate Club NZ

On Wednesday After school, we were fortunate to have Emily from Climate Club NZ, an Auckland Council initiative for raising climate change awareness and taking action in our local communities. We had the opportunity to discuss what climate action can be taken across 4 different sections: Transport, Food and Framing, Energy Use and Generation and Making Stuff last. We decided to take immediate action on the ongoing transport issue, with the number of cars on the road increasing, and the use of public transport needing an increase. We are hoping to speak with Auckland Transport to establish an AT run school bus on the routes that have heavy student use. We are also looking to reduce public transport costs on those buses. It was a fun afternoon with an opportunity to take action against the ongoing climate issue, and to make change in our community. *Adi Parab (Sustainability Committee)*

Community Survey

Thank you to the families who have already completed the community survey that was emailed last week. We would appreciate hearing from as many of you as possible before Wednesday 11 September. The link is here: <https://forms.gle/pctuRUGhEzYeJDNh6>

Students and staff are completing their surveys over the next week so we can identify patterns across all our groups.

Wā hono Project Week

Our annual Wā hono Project week is running from 2 – 6 December. This week is when Year 9 and 10 students opt into projects that connect their learning across the curriculum and make connections with the community. Previous projects include making Christmas cakes and delivering them to retirement villages, teaching primary school students new sports, and cleaning up community parks and beaches. If you are involved with a community group that would like some student support this week, please email Sharyn Hunt shunt@lynfield.school.nz to register your interest.

Shave for a Cure

On Thursday 29th August our annual Shave for a Cure event was held in support of the Cancer Society New Zealand. About 25,000 kiwis get diagnosed with cancer each year, and the Cancer Society plays a massive role in supporting these people and their families. Several students and staff had their heads shaved during our event, and the Head Students would like to thank them for their courage and bravery. Thank you so much to everyone who donated, had their head shaved, or just came along to support. You have all made a difference and have made this event such a memorable one in 2024!



September Assessment Period – Thursday 12 – Friday 20 September

The 7 days of Assessment are for practice external exams and some internal practical assessments. Year 12 and 13 students will be on study leave during this time and only need to come to school for their exam/assessment.

Year 11 students are **NOT ON STUDY LEAVE**, they will attend normal timetabled classes during this period. Should they have any assessments during this time, they will be completed in their normal timetabled lessons.

[September Exam Timetable 2024](#)

LitNum assessments will take place on **Tuesday 10 and Wednesday 11 September**.

Attendance

One of our annual goals is to improve attendance rates of students here at Lynfield College. So far in Term 3 with the new procedures in place we have seen an increase of 10% in students attending school regularly. The Ministry of Education categorises a student who attends school regularly to have at least 90% attendance. You can see your child's overall attendance at school rate in the weekly attendance summary that is emailed out each Monday morning.

As parents or caregivers, you play a big role in helping your children to do well in school. One way you can support the college, and your children is making sure they come to school every day and letting us know if they are sick – either email absence@lynfield.school.nz or inform us via the SchoolBridge App. <https://shorturl.at/FEapr>

Below is an infographic that highlights how much learning time is lost across 5 years of secondary schooling even if a student is at 90% attendance! Should you require any support with your child's attendance at Lynfield College please contact their year level dean in the first instance

Year 9 – Mrs Reynolds – sreynolds@lynfield.school.nz

Year 10 – Ms Arthur – harthur@lynfield.school.nz

Year 11 – Mr Braithwaite – sbraithwaite@lynfield.school.nz

Year 12 – Mr Appleby – jappleby@lynfield.school.nz

Year 13 – Mrs Prasad – rprasad@lynfield.school.nz

The following link is the Ministry of Education's attendance guide for parents and caregivers.

<https://parents.education.govt.nz/essential-information/attendance-every-day-matters/>



Checking Measles Immunity

MINISTRY OF EDUCATION SCHOOL BULLETIN - HEALTH, SAFETY AND WELLBEING

Aotearoa is at very high risk of a measles outbreak and not enough of us are immune. To be immune, you must have had measles before OR at least two doses of a measles vaccine after the age of 12 months. Local childhood immunisation rates are declining. Low immunity and the close contact nature of education settings means one infected person could quickly expose and spread measles to many others, starting an outbreak that could be hard to control. People can be infectious before they develop measles symptoms and know they're sick. Being immune is important for everyone's safety – it's the only way to make sure you won't get or spread measles, even if you've been exposed. See information on checking immunity here:

[Measles immunity – Health New Zealand | Te Whatu Ora](#)

[My Health Record – Health New Zealand | Te Whatu Ora](#)

If you aren't immune, or you're not sure, two doses of the measles mumps and rubella (MMR) vaccine is your best protection. You can book a vaccine online: [Home – Book my vaccine](#)

Multilingual videos to raise awareness about measles and MMR vaccine

The Ministry for Ethnic Communities, with the support of Te Whatu Ora, has released a series of three animated videos to explain what measles is, how to protect yourself from the disease and where you can access reliable health information. The videos are translated and voiced over into 20 different languages, including:

Chinese (simplified) with voiceover in Mandarin

Arabic

Spanish

[Health videos for ethnic communities – Ministry for Ethnic Communities](#)



Sports Scene

NZ SHORT COURSE SWIMMING CHAMPIONSHIPS

Last week, from Tuesday to Saturday, Kevin Zhang competed at the NZ short Course Swimming Champs (25m pool) with fantastic results!

Kevin was competing in the 17-18 year old age group (as a 17 year old) and then was making the main A finals.

A highlight of Kevin's performance on Saturday was breaking a NZ record for 17 year olds in the 200m medley, which has stood since 2013!

Kevin's results:

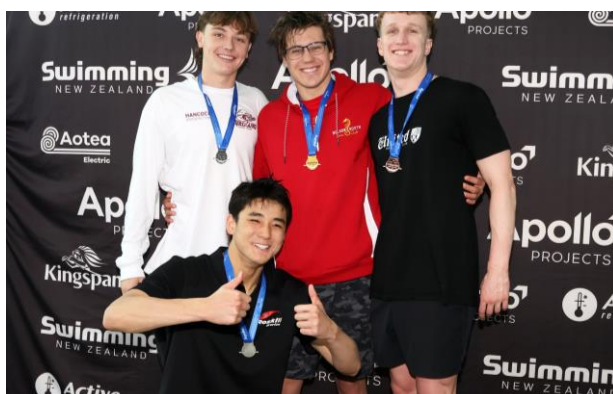
Gold in 200 free in age group, 6th in main open final

Bronze 400 free in age groups

Silver in 100m medley in age group and 4th in NZ

Silver in 100m free in age group, 9th overall

Gold in 200 medley in age group and took 1.4 sec off PB then in final was second in NZ and took another 1.09 sec off his PB from qualifying to break.



WINTER AIM ARCHERY SCHOOL CHAMPIONSHIPS

Three Lynfield College students participated in the Winter Aim Archery School Champs on Sunday 25 August.

Rajal Sharma (Year 11) won Gold in the U19 Compound Division

Anika Wong (Year 12) won Silver in the U19 Barebow Division

Holly McCutcheon (Year 12) participated in the U19 Recurve Division and did very well.



If your son &/or daughter has achieved representative status (Auckland or NZ) or has competed in such events the Sports Office would very much like to hear about this. Please either ask them to bring proof of the team they made/ level they achieved (eg. certificate, letter of selection etc) so we have the exact wording of their achievement, or email these details to sport@lynfield.school.nz.

Uniform & Stationery Shop

TEMPORARY SHOP CLOSURE IN TERM 4

The Uniform and Stationery Shop will be closed on Monday 14 and Tuesday 15 October 2024. We will be open as usual from Wednesday 16 October.

HOURS

The Uniform and Stationery Shop is open to all students on site for their uniform and stationery needs during interval and lunchtime Mondays to Thursdays, and on Fridays before school at 8am and interval.

We are not open on Saturday and Sunday, Teacher Only Days or the between term holidays.

Parents can attend the shop at the following times:

Monday – Thursday: 10.00am – 12.00pm and 12.30pm – 1.30pm

Friday: 8.00am – 11.30am

ONLINE ORDERING

Online ordering is available through our website <https://www.lynfield.school.nz/shop.html>. Payment can be made by direct credit or credit card and students onsite are able to collect the items from the Shop during the above times.

Stationery packs are available in the shop and online for year 9 students. Stationery lists for all other year levels can be found on our website <https://www.lynfield.school.nz/site/lynfieldcollege/files/Stationery-Lists-2022.pdf> and all stationery items on the lists are available for purchase at the Uniform and Stationery shop.

For any further queries please email Alys Higgs at uniformshop@lynfield.school.nz

RETURNS POLICY

We require a purchase receipt and tags to still be in garments to process returns. Please be aware that we can only return items up to 90 days from the date on your receipt.

Lost Property

If your child has lost uniform items, please ask them to check the Lost Property bin outside the Uniform Shop

PLEASE REMEMBER TO NAME YOUR CHILD'S UNIFORM.

Laundry Markers can also be purchased from the uniform and stationery shop.

Community News

WATERCARE – HUIA 1 WATERMAIN UPDATE

Upcoming works on Heaphy Street, Blockhouse Bay

From approximately 9 September 2024 until mid-October 2024 a section of Heaphy Street will be closed. This closure is required to carry out connection works.

Working hours will be from 7am – 6.30pm, Monday to Friday, and 7am – 4pm on Saturday, including some statutory holidays. Water supply to properties will not be affected during these works. Access to businesses and residential properties will remain open.



OPEN DAY @ LYNFIELD TENNIS CLUB

EVERYONE WELCOME!

08 SEPT 2024 10AM-2PM

FREE EVENT



Come give tennis a go!
All equipment provided.
Prizes, giveaways, BBQ & more.

love tennis



NZ SAILING TRUST

30TH SEPT
2024
TO
4TH OCT
2024

5 DAY SCHOOL HOLIDAY JOURNEY

Embark on an Epic 5-Day Teen Sailing Adventure! Calling all teens aged 14-18! Get ready to embark on an unforgettable journey that blends adventure, skill-building, and lasting friendships.

Sail onboard the Legendary Boat,

Steinlager ②

Master Sailing Basics:

Learn navigation and weather prediction. Cook & Sleep onboard: Prepare meals and experience nights on deck. Rise to the Challenge: Test your grit and decision-making with support from experienced instructors who will guide you every step of the way. Achieve Greatness:

Earn credit towards the prestigious Duke of Edinburgh Hillary Award.

All-Inclusive Price:

For just \$1,575 per person, you'll get meals, accommodation and adventure. Ready to Set Sail?

Secure your spot now and start the adventure of a lifetime!

